

Principal: Ms Melissa Gibson, MA, MPhil

Friday 15th May 2026

Dear Families,

Examinations are still continuing across the school, and we would like to commend all students for the mature and focused approach they have shown throughout this demanding period.

On Wednesday a group of our students had the fantastic opportunity to take part in the “Made in the East End” poetry event held at Oxford House in Bethnal Green. The event celebrated creativity, identity, culture, and the voices of young people across East London. Our students performed a range of powerful and thoughtful pieces in front of an audience of peers, staff, and members of the local community.

This week also saw students in Years 10 and 12 continue their participation in the Envision mentoring programme, working alongside mentors to develop leadership, communication, and teamwork skills.

On Thursday the Heads of House hosted the annual House Awards celebration. This was a fantastic event celebrating our amazing students and their contributions to the house system and to the school more widely. The evening was a brilliant example of students living out our values of ambition, inclusion and community at all levels in the school.

Half term

The school breaks up for half term on Friday 22nd May. All students return to school on Monday 1st June.

There will be programme of interventions running for exam groups during this period with more information provided shortly.

Staff Inset Day

Monday 29th June 2026 is a staff inset day and the school will therefore be closed to pupils.

Parking outside of the school

We kindly remind parents and carers not to park on the zig-zag lines at the front of the school. These areas must be kept clear to ensure the safety of our students as they cross the road. Thank you for helping us to keep our school community safe. Please turn your car engines off during pick up and drop off to consider our neighbours and air quality of the school.

Yours faithfully,



Ms Melissa Gibson
Principal

Part of the

Mulberry
Schools Trust



HOUSE

AWARDS 2026

Some moments from the fantastic House Awards on Thursday!
Thank you to all the students who make the Houses so amazing!



Societies: Made in the East End

On Wednesday, over forty Year 9 Societies students attended Oxford House for the official launch of their Anthology. A number of students performed their poems, to a standing ovation, before receiving a published copy of their work and a certificate of their achievements. The poems were beautifully written, reflecting their experiences of growing up in the East End and what it means to them and their families.



MULBERRY STEM ACADEMY

IN PARTNERSHIP WITH  MERCEDES-BENZ GRAND PRIX



The Greenpower season begins at Lotus Hethel

Our new cohort of Year 12 students went to Lotus Hethel test track for their season opening Greenpower race. At times it was very windy and they hid in the minibus, but other than that they enjoyed the day. Two drivers went out for practice and did well. For the actual race it was a slow start, however, the driver quickly picked up speed and got into the swing of racing. The team finished sixth in their category and tenth overall. We're looking forward to our next race at the prestigious Goodwood race track on 24th May. They will be joined by our Year 9 and 10 students.



Year 9 car build

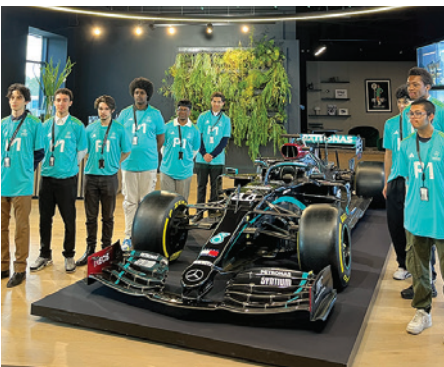
Year 9 Mulberry STEM Academy students build their Greenpower car in preparation for their first ever race next weekend! Good luck to the team!



Work Experience at Mercedes-Benz Grand Prix



From Tuesday 5th to Friday 8th of May, seven Year 12 STEM students stayed over in Brackley to complete work experience at the Mercedes AMG Petronas F1 team factory. During the week, they experienced work in several different sectors. This includes welding, IT, aerodynamics and many more. The students were also very lucky as they were able to have a Q&A session with Toto Wolff, the Principal of the Mercedes F1 team.



Mulberry Academy Shoreditch

ROOT WORD OF THE WEEK

The 'root' is the basic part of a word that has meaning and can have a 'prefix' or 'suffix' added to it.

bene

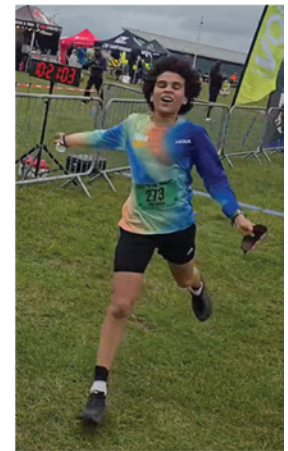
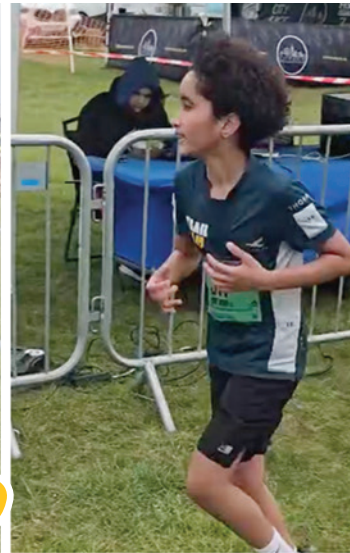
= well/good

EXAMPLES

- Benevolent** - Benevolent means 'kind'. E.g. the girl was benevolent, she helped the boy after he'd fallen.
- Beneficial** - Beneficial means 'useful, helpful' or 'good'. E.g. The insect is beneficial to the plant.
- Beneign** - Benign means 'pleasant' and 'not harmful'. E.g. The benign nurse helped the child.

TRAILFAM

Well done to all our runners who took part in Black to the Trails 2025 at Dunstable Downs on Sunday 11th May. Good luck to members of MAS staff and TrailFam Community that are running the Hackney Half Marathon this weekend to raise money for TrailFam!



On Friday, Year 10 GCSE PE students enjoyed a reward trip to Nando's.

Asthma Pumps

If your child has asthma, please make sure they bring their Asthma pumps to school daily. School also need a spare Asthma pump as well.

Medication for Care Plans

Please can you make sure that your child's medication is brought into school if you have received a text requiring this. It is important that school have up to date medication.



MATHS PROBLEM OF THE WEEK

Did you manage to solve the maths problem this week?

I choose four different integers. When I add all the pairs of these numbers in turn, the totals that I obtain are 23, 26, 29, 32 and 35, with one of these totals being repeated.

What is the largest of the four integers?

ANSWER: 19

Let the four different integers, in ascending order, be p, q, r, s . Then $p < q < r < s$. So $p+q < p+r < p+s < q+s < r+s$ and $p+q < p+r < q+r < q+s < r+s$. Each of these strings of inequalities gives five different values for sums of pairs. So each is the string of five values given in the question: namely $23 < 26 < 29 < 32 < 35$. Hence it may be deduced that $p+q = 23; p+r = 26; p+s = q+r = 29; q+s = 32; r+s = 35$. Therefore $s-r = (p+s) - (p+r) = 29 - 26 = 3$. So $(r+s) + (s-r) = 35 + 3 = 38$. Hence $2s = 38$ and the largest of the four integers is 19.

(It is left as an exercise for the reader to calculate the values of the other three integers and to check that, when added in pairs, the four integers give the sums stated in the question.)

SUPPORTING YOUR CHILD TO stay safe online

online actions can have longer-term consequences

What is posted online can be seen by future schools, employers or wider audiences. For example, posts, comments or usernames may still be visible years later, even if accounts have changed. This can affect opportunities later, even if the content was shared at a young age.

What parents can do: Help your child think about the kind of online reputation they want to build over time.

If you have any concerns, please speak to your child's head of year or contact Lauren Gillott, E-Safety Lead (lgillott@mulberryschoolstrust.org)