

Mulberry

Academy Shoreditch

A SECONDARY SCHOOL FOR BOYS AND GIRLS AGED 11 TO 18 YEARS

PROSPECTUS 2025-2026

Part of the
Mulberry
Schools Trust







When I first came here it felt like a magical place, helpful and friendly. I got so much support in my studies and also in my personal life. When I come into school I feel comfortable. I feel euphoric.” [Year 13 student](#)

Contents

Executive Principal’s welcome	4
A message for our prospective Year 7 students.....	5
Student experience like no other.....	6
Our ethos and vision.....	6
Quality partnerships	7
Introducing our House system.....	8
Our curriculum	10
Inclusion.....	12
Gifted and Talented students.....	13
Primary transition	14
Joining our school	15
Admissions	15
In year admissions.....	15
Our uniform.....	16
Key Stage 3 and 4 dress code.....	16
Sixth Form dress code.....	17
About the Mulberry Schools Trust	18
Find us.....	19

Executive Principal's welcome



Welcome to Mulberry Academy Shoreditch, a school for boys and girls aged 11-18 years. We deliver academic excellence and provide students with unrivalled experiences, rooted in Mulberry's values and commitment to achieving the very best educational outcomes for all.

I hope this prospectus will give you a taste of life at our school, an insight into the opportunities we offer and the successes our students enjoy.

Our students thrive in a caring, supportive and nurturing environment, where they are continuously inspired, motivated and encouraged. I bring many years of successful leadership experience in an inner London setting and I use this knowledge to set very high expectations for everyone within the school's community.

From Year 7 through to sixth form, we will ensure that students leave us fully prepared as independent and successful young adults, with a portfolio of skills that sets them apart from their contemporaries.

This is a fantastic time for your child to be joining Mulberry Academy Shoreditch. In September 2019 we launched our new House system and all students, staff and governors are members of one of our six Houses.

By selecting Mulberry Academy Shoreditch for your child, you are choosing an education filled with academic rigour and high standards, opportunity at every turn and a range of experiences that will inspire, engage and challenge all students.

This prospectus offers only a glimpse of our wonderful school. I encourage you to attend one of our events, where I can welcome you and arrange a tour of our excellent facilities, and provide you with an opportunity to meet the students and staff who make our school so special.

Mrs Ruth Holden
Executive Principal



A message for our prospective Year 7 students

Mulberry Academy Shoreditch are looking forward to working in partnership with our new families to ensure your child flourishes and achieves their full potential.

We provide extremely high standards of pastoral care for all our students and we have the highest expectations of students' behaviour and learning.

In return, you can expect us to provide superb learning opportunities, and a varied and exciting set of extra-curricular and enrichment activities. Please support us to ensure your child attends school every day and that they make the most of the wide variety of opportunities available whilst studying here.

The development of Mulberry Academy Shoreditch sixth form means students can now study here from Year 7 through to Year 13. This will provide students with the continuity and stability, in an outstanding learning environment, to prepare them for the next stage of their education or chosen career.

Throughout the year there will be many opportunities for you to visit the school to discuss your child's progress. Please make full use of this, as it is essential that you attend to support your child's learning.

Please call the school and one of our helpful members of staff will arrange an appointment for you or email our dedicated address for parents:
parents@mulberryacademyshoreditch.org.





Student experience like no other

Our student experience is what makes Mulberry Academy Shoreditch unique. Within and beyond our high achieving school environment, our students take part in many creative and cultural experiences including arts, sports, drama, music, modern foreign languages, volunteering and fundraising. They develop an exceptional range of skills including determination, confidence, teamwork, leadership, resilience and resourcefulness. These skills and experiences set them apart from their peers when they move on to the world of further education, training or employment.

Students' learning is complemented by an impressive array of trips, events and adventures. We believe this enables students to prepare for modern life in the 21st century. From Roman Festivals held in school, to educational trips far and wide, our students receive a rounded and relevant enrichment offer which we are proud of.

We offer opportunities for students to access advice, guidance and pointers from the world of work and regularly welcome guest speakers and professionals into the school from a range of sectors, such as Law, Finance, the Arts, Social Enterprise and Technology.

Our unrivalled enrichment programme has been designed to develop important skills and bring learning to life, all the while stimulating students' interest and igniting their creative passions and talents.

Our ethos and vision

Our ethos

Outstanding learning and teaching is at the core of everything we do at Mulberry Academy Shoreditch. We aim to raise attainment to exceptional levels and we value the contribution that every individual can make to the school, regardless of ability or background. We have the highest expectations of all, in a caring and supportive environment. Our students are active citizens and make a positive contribution to the local, national and global community.

Our vision

Our vision at Mulberry Academy Shoreditch is to ensure that every student maximises their potential. We will empower students to become independent learners, critical in their thinking, informed in their choices and confident in their ability to succeed in the modern world.

We will do this by:

- Ensuring all students develop the values and gain the qualifications they need for the next steps in their lives.
- Ensuring that teaching staff are an inspirational, dedicated and well-supported team who provide exceptional teaching, enabling students to succeed in their studies.
- Providing an environment where students feel safe, secure and empowered to make positive life choices.
- Building trusting and informed relationships with parents/carers, so they are fully involved in their child's learning.
- Managing resources effectively and efficiently ensuring value for money.
- Making Mulberry Academy Shoreditch a thriving hub in the local community, in which everyone can make a difference.



Quality partnerships

Mulberry Academy Shoreditch is truly an inclusive school, which serves the local community. Our young people are educated in a safe, happy and welcoming environment so they can flourish. We collaborate with local, national and global organisations and we build strong relationships with our parents/carers so that we are able to deliver excellence in partnership with our community.

We believe that the richness of our offer is enhanced through quality partnerships, networks and collaborative projects. Our aim is to enrich our students' learning, confidence and motivation and in turn impact on the quality of school life and staff development. Our partners include local primary and secondary schools, the Prince's Trust, St Hilda's, Citizens UK, Tower Hamlets Food Bank (First Give), Diversity Role Models, InvestIN, Oxford House, #iwill, Challenge Partners and Tower Hamlets Education Partnership to name a few.

The benefits of our partnerships are enjoyed by our whole school community. Working in collaboration with a range of partner organisations enables us to maintain high academic standards and expectations, gain expertise and insights, offer additional benefits and bring learning to life.



We learnt Spanish which I had not done before and we worked together on fun activities.”

Year 6 student, Easter school



Introducing our House system

In September 2019 we launched our new House system with students, staff and governors all becoming members of one of our six new School Houses: Tower, Tate, Trafalgar, Thames, Globe and Barbican. Our House system will enhance our students' learning and experience as they journey with us. Students will gain access to a wealth of cultural, sports, musical, entrepreneurial and social action activities, programmes and initiatives that are exemplary.

The House system presents quality leadership opportunities, encourages student participation in extra-curricular activities, fosters a spirit of healthy competition and celebrates success, as well as integrating students across the year groups.

This means students will enjoy exciting competitions and events within their House, as well as inter-House competitions. There will be an annual Sports Day and opportunities to receive rewards and awards for outstanding achievement. Students will feel a sense of belonging with the opportunity to participate in numerous leadership, team building and learning experiences, as well as so much more!



It's exciting to belong to a house with my brother and getting to know and work with other students in the years above me." **Year 7 student**



Our aims

The aims of our House system is to provide each and every student with:

- A sense of belonging within the school community
- Opportunities to develop social, physical and practical skills
- A sense of achievement both inside and outside the classroom
- Fun and excitement through competition
- Opportunities for leadership
- An awareness of individual and collective responsibility

In House tutor groups there will be students from Years 7 through to sixth form. This is called vertical tutoring and provides a great opportunity to get to know and learn from students in the older years!

We operate on a two week timetable, which means during Week 1 students will have tutor time with their year group and during Week 2, they will have tutor time with their House groups.

All Year 7 students will be introduced to their Head of House and provided with a House tie and planner on their first day of school.



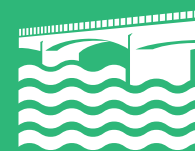
TOWER

COURAGE · HUMILITY · VICTORY



TRAFALGAR

POSITIVITY · CREATIVITY · SUCCESS



THAMES

INTEGRITY · ENRICHMENT · DIRECTION



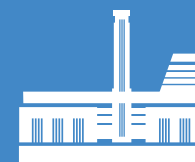
GLOBE

INTELLIGENCE · HONOUR · BRAVERY



BARBICAN

RESILIENCE · DARING · INCLUSIVE



TATE

IMPROVE · TRANSFORM · INSPIRE



Our curriculum

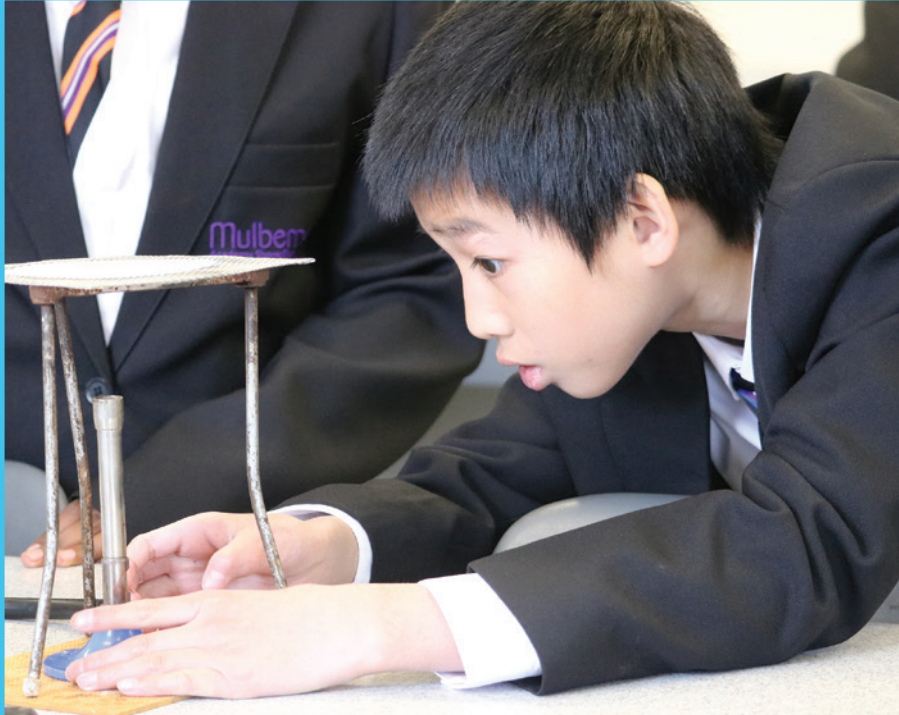
Our curriculum is about ensuring students have a love of learning; love and enjoy what they are learning and how they learn. It is a curriculum that is challenging, coherent and enriching, highly ambitious and fundamentally inclusive of all students.

We will provide every opportunity we can through the curriculum so that our students can be sure of:

- The highest academic achievement
- Encouragement of creative expression
- A commitment to social action and the community
- The best possible preparation for each next learning stage towards aspirational destinations

Our curriculum options are divided into three pathways that set out the 11-19 learning journey students undertake while at the school. At all key stages, students are assessed on their attainment, progress and attitude to learning.





Sixth Form

Creative sixth form lessons inspire and challenge students, whilst also preparing them for the demands of further study and independent learning. We offer a tailored curriculum for each pathway, which allows us to meet the needs of all students who wish to continue their studies further.

Whether the ambition is to go to university, follow a vocational career or become their own boss, we have a personalised approach that meets the needs of all our students.

More detailed information about our curriculum can be found on our website.



Inclusion

Mulberry Academy Shoreditch is proud to serve the community as a fully inclusive school and we love, value, support and encourage all our students. Inclusion is our highest priority.

The achievement of students with special educational needs and disability (SEND) is outstanding and the personalised support we put in place for students means they are able to flourish as independent and confident learners.

The base for our SEND provision is a dedicated and well equipped suite of rooms in the Inclusion area as well as the Learning Support Unit, which is at the core of the school. One of the most important aspects of provision is the in-class support provided by our highly skilled and committed team of Teaching Assistants working across all curriculum areas. We also have a team of Learning Mentors who support students both in and out of the classroom.

In order for students to succeed, we recognise that curriculum access to all subject areas is essential. This can only be achieved when students can confidently read, understand and respond to the material being studied.

We are committed to improving literacy skills for all students. Our highly experienced Literacy Team constantly promote the importance of reading for pleasure and specifically targets those students for whom additional support is required. We use a variety of strategies including one to one and small group literacy interventions. Our aim is to ensure that poor literacy is never a barrier to achievement and we strive to enable all of our students to have regular access to a wide range of high quality literature.



I really enjoyed the Celebrating Difference Awards. It felt great to receive an award, but I loved seeing other people win awards as well.” Year 8 student



Gifted and Talented students

Gifted and Talented students are stretched and challenged during lessons to ensure they achieve their full potential. There are also a wide variety of extracurricular activities such as university visits, business mentoring and debating clubs which are aimed at raising student aspirations and adding extra elements of academic challenge to the curriculum.

If you would like any further information about any aspect of Inclusion at Mulberry Academy Shoreditch please contact our Director of Learning Support/SENCO.

Primary transition

At Mulberry Academy Shoreditch we appreciate how important it is to ensure that all students have a smooth and seamless transition from primary to secondary school.

Throughout September and October the school organises a series of open mornings and an open evening event where you can visit and see the school at work. We would encourage you to visit as many times as you wish. The choice of your son or daughter's secondary school is a crucial decision and we have a dedicated Transition Team who will be able to answer any questions you may have.

If your child is successful in obtaining a place at Mulberry Academy Shoreditch we will invite you and your child to a 'Getting to know you' meeting. We appreciate that the key to a successful secondary school career is partnership between home and school. At the meeting, we will be able to provide you with all the relevant information that you will need to prepare you and your child for transition to secondary school. We will also be able to gather important information that will help us to support your child's academic and social development when they join the school.

In the summer term, your child will attend a transition day based at the school. The aim of the day is to ensure your child becomes familiar with the building, facilities, staff and timetable to reduce any anxiety or worries he or she may have prior to September.

A Parents' Information Evening is also held in the summer term which will enable you to meet key staff and discover more about what subjects your child will be studying and how you can best support his or her learning when the transition to secondary school is made.

Please contact our Head of Key Stage 3 or one of our Deputy Principals if you require further information on any aspect of transition.



Joining our school

Admissions

We follow the London Borough of Tower Hamlets' policy and procedures for secondary school transfer arrangements. Full details are published in the local authority's 'Ready for Secondary School in Tower Hamlets' admissions booklet, which can be found online at www.towerhamlets.gov.uk/schooladmissions, along with other helpful guidance.

If you wish to apply for a place at Mulberry Academy Shoreditch, please complete the online application form at www.towerhamlets.gov.uk/schooladmissions or www.eadmissions.org.uk. You can apply between 1st September to 31st October.

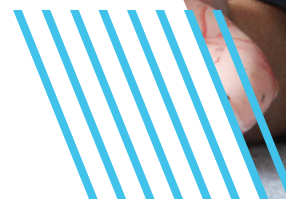
If you live outside of Tower Hamlets, but wish to apply for a place at Mulberry Academy Shoreditch, you must apply online following the instructions issued by your home borough (your local authority). You must also complete the Tower Hamlets supplementary form, available from Pupil Services. For help with your application, please contact the Pupil Services team on 020 7364 5006

In year admissions

If you wish to apply for a Year 7 school place after the usual intake in September, or for a place in any other year group, then you must apply using the Tower Hamlets 'In-Year Common Application Form' available online. Please visit www.towerhamlets.gov.uk/schooladmissions for further information.



The lessons at this school are brilliant and also the after-school clubs here are interesting.” Year 7 student



Our uniform

Key Stage 3 and 4 dress code

Our smart and practical uniform at Mulberry Academy Shoreditch is compulsory and must be worn at all times travelling to and from the school.

The school uniform shows that students belong to our school community and should be worn with pride. We expect our culture of high expectations to be reflected in our students' uniform.

Parents/carers must obtain bespoke school uniform items (i.e. blazer, tie, PE t-shirt, jumper and Shalwar Kameez) from the school's uniform suppliers. To help minimise costs, parents/carers can purchase other uniform items such as shirts, skirts and trousers from clothes departments of larger supermarkets or department stores. However, they must adhere to the guidelines provided below.

Ties will be provided to all students starting in September.

More detailed information about our uniform can be found in the 'Home School Agreement including Uniform Policy' on our website.

Compulsory items

- Mulberry Academy Shoreditch black blazer
- Black straight fit trousers in the same fabric as the blazer and/or black knee length or below school skirt in the same fabric as the blazer
- White shirt
- School House tie (this will be provided by the school)
- Smart black leather shoes or ankle boots (flat with black sole)
- Black tights or black/white socks
- Plain school bag that is large enough to carry books and A4 size folders such as a back pack or sports bag. No handbags are permitted.
- Plain, dark coloured waterproof outdoor jacket.



Optional items

- Mulberry Academy Shoreditch black V-neck jumper
- Black salwar kameez with purple school trim
- White Shirt
- Plain black jilbab/Burka with purple school trim
- Plain black head scarf, coloured trims or designs are not permitted

PE Kit

Compulsory Items

- School black short sleeved t-shirt or long Sleeved t-shirt
- Black shorts (plain)
- White socks
- Trainers

Optional Items:

- Black tracksuit bottoms
- School black track suit top

Judgements on acceptability can only be made by staff at the school. Full details about our uniform, including hairstyles, jewellery, makeup and other information can be found in our 'Home School Agreement including Uniform Policy'.

Bespoke school uniform items (blazer, tie, PE t-shirt, jumper, Salwar Keemez) can be obtained from Khalsa Schoolwear or Ocean Designs Schoolwear Ltd at the addresses below.

- Khalsa Schoolwear, 388 Bethnal Green Road, London, E2 OAH.
- Ocean Designs Schoolwear Ltd, 10 Watney Market, London, E1 2PR.

All other uniform items can be obtained from other suppliers of your choice.



Sixth Form dress code

Female

- Business attire
- Smart office shoes

Male

- Smart trouser
- Smart collared shirt (tie is optional)
- Smart office shoes

What is not acceptable

- Any type of denim
- Large patterned garments
- Short skirts
- Low cut tops



About the Mulberry Schools Trust



The Mulberry Schools Trust is a flourishing multi-academy trust set up in 2016 in Tower Hamlets. The Mulberry Schools Trust currently includes Mulberry Academy Shoreditch, Mulberry School for Girls and Mulberry UTC, and is now working with the Local Authority and the Department for Education to build a new school in Wapping - Mulberry Academy London Dock. The Trust believes in the power of partnerships with families, other local schools and the communities that it serves.

The Mulberry Schools Trust believes that all children and young people should have access to the best possible education and employment opportunities, so that birth and wealth do not determine future life chances. By providing outstanding educational opportunities, the Mulberry Schools Trust will also help generate local growth and development, at a time when east London's economy is beginning to thrive.

The Mulberry experience is driven by a strong curriculum and an extended learning and enrichment programme. As part of the Mulberry Schools Trust, Mulberry Academy Shoreditch will work in partnership with other schools in the Trust, benefiting from a wealth of expertise and educational opportunities including:

- Highly qualified specialist teachers in all GCSE and A-level subjects
- One of the most extensive Extended Learning programmes in the country
- Exceptional range of partnerships with local and national organisations including the Southbank Centre, Michelle Obama's Global Girls' Opportunity Alliance, the Donmar Warehouse and the Royal Court Theatre
- World-class professional development and training for staff, including our leadership development programmes

I hope you will choose to join us in our work to enjoy learning, excel at the highest academic and technical levels of qualification, take advantage of wider opportunities for development and make a positive difference within our rich, diverse global society.

For further information about the Mulberry Schools Trust, please visit www.mulberryschoolstrust.org.

Dr Vanessa Ogden
CEO, Mulberry Schools Trust
Headteacher, Mulberry School for Girls



Find us

Mulberry Academy Shoreditch is proud to serve our neighbouring primary schools in both Tower Hamlets and Hackney, many of which are just a short walk away. We are located between Hackney Road and Bethnal Green Road and close to many public transport connections.

By bus

- 8 and 388 buses via Bethnal Green Road
- 26, 48 and 55 buses via Hackney Road

By tube and rail

We are a short walk from the following tube and rail stations

- [Central line](#) Bethnal Green and Liverpool Street
- [Overground](#) Hoxton and Shoreditch High Street
- [Rail stations](#) Liverpool Street, Bethnal Green and Cambridge Heath

Mulberry Academy Shoreditch

 Gosset Street . London E2 6NW

 020 7920 7900

 020 7920 7999

 info@mulberryacademyshoreditch.org

www.mulberryacademyshoreditch.org

 [MulberryAcademyShoreditch](#)  [Mulberry Academy Shoreditch](#)